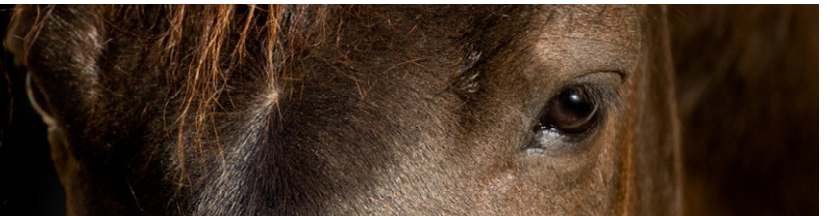




Saffron Walden & District  
**RIDING CLUB**



# UNAFFILIATED DRESSAGE

at Frenches Farm, Oxen End, Braintree, CM7 4PU



Friday 2<sup>nd</sup> April 2021



Class 1 - Intro A (2008)

Class 2 - Prelim 14 (2016)

Class 3 - Prelim 18 (2016)

Class 4 - Novice 24 (2010)

Class 5 - Novice 28 (2008)

Class 6 - PYO Elem 44 (2002) / Med 63 (2002)

(both PYO classes may be entered, but will be judged on percentage as one class)

All EVENT/CLUB info  
[www.swdrc.co.uk](http://www.swdrc.co.uk)



- RESTRICTIONS:** There are no horse or rider restrictions on any of the classes
- ENTRY CLOSE:** Monday 29<sup>th</sup> March 2021 (or when classes are full)
- ENTRY FEE:** SWDRC member £12.50, non SWDRC member £14.50. NO LATE ENTRIES ACCEPTED
- MAKING AN ENTRY:** Enter and pay on line at [www.clubentries.com/saffronrc](http://www.clubentries.com/saffronrc) (online entries only)
- SECRETARY:** By placing an entry you automatically agree to abide by the rules of the competition & Club
- TIMES:** SWDRC contact [info@swdrc.co.uk](mailto:info@swdrc.co.uk)
- PRIZES:** Wednesday 31<sup>st</sup> March 2021, [www.swdrc.co.uk](http://www.swdrc.co.uk) or SWDRC Facebook
- WARM UP:** Rosettes to 6<sup>th</sup> place in all classes. Members senior and junior annual points trophy
- NOTE:** Numbers in warm up area(s) will be limited and warm up times will be allocated
- DIRECTIONS:** Warm up and competition arena on a surface
- In case of bad weather please check website see website [www.swdrc.co.uk/Facebook](http://www.swdrc.co.uk/Facebook)
- Frenches Farm is located 0.5 miles off the B1057 at Little Bardfield

**All competitors will be allocated warm up and test times.**  
**Times will be emailed out and published on SWDRC website and facebook.**  
**COVID-19 protocols will be in place and the latest government guidelines must be adhered to.**  
**Information will be published before the event and sent to all competitors.**

**No spectators (this is a closed-door event).**  
**Please keep helpers to an absolute minimum and maintain social distancing (no additional vehicles).**  
**Face masks should be worn at all times unless mounted or in/at your vehicle.**  
**No dogs on the showground (or they must remain in vehicles).**

## SPECIFIC COVID-19 RULES

1. Everyone attending must take their temperature on the morning of the event, if it is not normal you must not attend the event.
2. Anyone experiencing Covid-19 symptoms, however mild, should stay at home. Anyone who has been in contact with someone that is showing symptoms should stay at home. Anyone considered vulnerable should stay at home.
3. There may be no toilet facilities available.
4. There may be no catering/refreshment facilities available, unless specifically stated/advised.
5. Number of competitors in warm up may be limited.
6. When test(s) are completed please depart from the event site at your earliest convenience to keep numbers on site to a minimum.
7. Final class scores will be posted on swdrc face book at the end of each class.
8. Sheets not picked up will be emailed out to competitors after the event.
9. Rosettes not picked up will be posted out after the event. If address details are incomplete at point of entry, then rosette will not be sent.
10. Details of everyone attending may be requested upon arrival at the venue for tracking purposes.

Competitors must take all their muck, hay and rubbish home with them  
 ALL OUR EVENTS ARE RUN BY VOLUNTEERS AND THE COMMITTEE HOPE THAT ALL COMPETITORS WILL SHOW  
 THEIR APPRECIATION AND TAKE ALL DECISIONS IN A SPORTING MANNER



# SAFFRON WALDEN & DISTRICT RIDING CLUB

## RULES AND CONDITION OF ENTRY



### Saffron Walden & District Riding Club Rules as at 24/03/2019.

1. Receipt of entry means that the entrant agrees to abide by the rules of the event and Saffron Walden and District Riding Club (SWDRC). Non-members entering any event must hold their own appropriate Public Liability insurance (to a minimum value of £2 million) to compete at SWDRC events which must be available to check should it be requested.
2. It should be considered a condition of entry that each competitor and spectator shall indemnify the organisers or any person acting on their behalf against legal action arising from accident or incident.
3. Specific event rules will be included on schedules, receipt of entry means that the entrant agrees to abide by Club rules AND specific event rules.
4. At all SWDRC events all competitors must wear a crash hat when mounted with chin straps fastened to comply with PAS 015 1998 or 2011, VGA 01.040: 2014-12 provided they are BSI Kitemarked. It is the competitors responsibility to comply to this rule. **FAILURE TO COMPLY MAY INCUR IMMEDIATE ELIMINATION.**
5. It is the onus of the competitor to only compete in classes for which they are eligible. The organisers and helpers of any event are not responsible for policing the eligibility of competitors for each event. All class restrictions at SWDRC events are self-governing (ie. by entering a class at a SWDRC event the competitor agrees to the specific class restrictions). If it is found at any time during the event that the competitor is not eligible the competitor may be allowed to continue, however they will not be placed. If it is found after the event that this rule has not been adhered to any relevant points will not be awarded toward any members trophies and entries may be declined for future events.
6. The organisers have taken reasonable precautions to ensure the health and safety of everyone present. For these measures to be effective, everyone should take all reasonable precautions to avoid and prevent accidents occurring and must obey the instructions of the organisers, officials and stewards.
7. Any instance of behaviour from any person on an event site that is deemed by the organisers or helpers of an event as rude, threatening or unacceptable will be asked to leave the site immediately with no refund of outstanding entry fee and may be prohibited from attending any further SWDRC events.
8. No persons other than the organisers and helpers may approach a SWDRC appointed Judge or Scorer during a competition, unless requested to do so by the Judge or official steward.
9. Any objection must be made in writing to the organiser within 15 minutes of an incident, together with a £10 deposit, which will be refunded only if the objection is upheld.
10. The committee of the Saffron Walden & District Riding Club, its Judges and appointed officials accept no responsibility for any loss or damage to property belonging to competitors, grooms or spectators.
11. Only members whose details have been received through an official Riding Club at BRC headquarters are covered by BRC insurance at events. BRC insurance covers the named person only, owners of horses/ponies who are not BRC members are not covered by BRC insurance and must hold their own insurance.
12. Riders must be suitably mounted, SWDRC committee/organisers decision is final.
13. BRC rules apply to events unless otherwise stated in the rules.
14. The committee reserves the right to refuse entry, alter or cancel any class without giving a reason.
15. The Judges decision is final.
16. Horses and ponies competing must be 4 years and over unless specifically stated.
17. Reckless, dangerous or inexperienced riding may incur elimination.
18. No rider may carry a whip exceeding 75cm in length, except for dressage events.
19. Dogs to be kept on a lead at all times and under control.
20. In case of bad weather conditions please check club Facebook or web page for event updates.
21. Should it become evident that a competitor is competing beneath their abilities, the committee may ask them to compete in a higher standard class.
22. If you do not wish any attending photographer to take your photo or publish images on their web site, you must advise the photographer directly.